

## BLUE4ALL expected impacts:



- Improved MPA management effectiveness
- Improved MPA networks in Europe
- Efficient implementation of the new biodiversity policy framework
- Increased participation of key stakeholders including business actors' in MPAs planning, management and conservation
- Reduced human impact on marine biodiversity
- Improved collaboration across projects as well as academics, business, and society

## BLUE4ALL stakeholders:



- 1 MPA managers and other key user groups involved in the MPA management
- 2 Other stakeholders with influence on the MPA management including NGOs, institutes, authorities, resource users, industry, and citizen groups
- 3 Society at large - EU-wide/global audience including planners, MPA managers, researchers, students



Join us in our efforts to build a better future for our oceans and the communities that depend on them!

Contact us:

**Steven Degraer**, Project Coordinator  
Royal Belgian Institute of Natural Sciences (RBINS)

Follow us:



@blue4all



@BLUE4ALLproject



blue4all.eu



The Blue4all project is funded by the European Union under Grant agreement ID 101094014. This publication was funded by the European Union. Its contents are the sole responsibility of the author(s) and do not necessarily reflect the views of the European Union.



Blueprint demonstration for  
co-created effective, efficient  
and resilient networks of MPAs

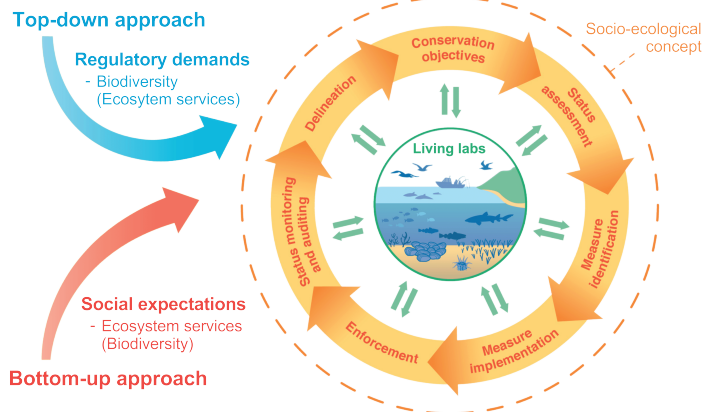
blue4all.eu

## Our Mission:

As EU Member States aim to legally protect 30% of Europe's sea and land areas, BLUE4ALL proposes a new approach to Marine Protected Areas (MPAs), aligning a bottom-up approach with the top-down approach to regulatory expectations as defined by the EU Biodiversity Strategy and national initiatives.

Our mission is to address the challenges faced in marine conservation and restoration in Europe including the social acceptability of MPAs, resulting with robust and replicable tools based on science. BLUE4ALL is a HORIZON Europe Ocean Mission project that began on January 1st, 2023 and will run until December 2026.

### Guidance for achieving effective, efficient and resilient MPAs



## Our Approach:

BLUE4ALL places stakeholders at the "steering wheel" from the outset of the MPA process, with adequate interaction and co-creation as the starting point. By gathering lessons learned from 25 information sites and Living Labs located in the Mediterranean Sea, Baltic Sea, and North-East Atlantic regions, BLUE4ALL will develop user-friendly platform for MPA managers and authorities for preserving

and restoring the marine environment. Living Labs are a socially innovative format for an open and continuous dialogue, aimed at understanding various stakeholders' interests and requirements. Such engagement is expected to put the key local actors into the 'driving seats' and enable co-development and co-management, thus building the buy-in and ownership from the onset.

